

This Provisional PDF corresponds to the article as it appeared upon acceptance. Fully formatted PDF and full text (HTML) versions will be made available soon.

CDO1 Promoter Methylation is a Biomarker for Outcome Prediction of Anthracycline Treated, Estrogen Receptor-Positive, Lymph Node-Positive Breast Cancer Patients

BMC Cancer 2010, **10**:247 doi:10.1186/1471-2407-10-247

Dimo Dietrich (dimo.dietrich@epigenomics.com)
Manuel Krispin (manuel.krispin@epigenomics.com)
Jorn Dietrich (joedietrich@web.de)
Anne Fassbender (anne.fassbender@epigenomics.com)
Jorn Lewin (joern.lewin@epigenomics.com)
Nadja Harbeck (nadia.harbeck@uk-koeln.de)
Manfred Schmitt (manfred.schmitt@lrz.tu-muenchen.de)
Serenella Eppenberger-Castori (sere.eppenberger@unibas.ch)
Vincent Vuaroqueaux (v.vuaroqueaux@tumorbank.org)
Frederique Spyrtos (f.spyrtos@stcloud-huguenin.org)
John A Foekens (j.foekens@erasmusmc.nl)
Ralf Lesche (ralf.lesche@bayerhealthcare.com)
John WM Martens (j.martens@erasmusmc.nl)

ISSN 1471-2407

Article type Research article

Submission date 30 July 2009

Acceptance date 1 June 2010

Publication date 1 June 2010

Article URL <http://www.biomedcentral.com/1471-2407/10/247>

Like all articles in BMC journals, this peer-reviewed article was published immediately upon acceptance. It can be downloaded, printed and distributed freely for any purposes (see copyright notice below).

Articles in BMC journals are listed in PubMed and archived at PubMed Central.

For information about publishing your research in BMC journals or any BioMed Central journal, go to

© 2010 Dietrich *et al.*, licensee BioMed Central Ltd.

This is an open access article distributed under the terms of the Creative Commons Attribution License (<http://creativecommons.org/licenses/by/2.0>), which permits unrestricted use, distribution, and reproduction in any medium, provided the original work is properly cited.

<http://www.biomedcentral.com/info/authors/>

CDO1 Promoter Methylation is a Biomarker for Outcome Prediction of Anthracycline Treated, Estrogen Receptor-Positive, Lymph Node-Positive Breast Cancer Patients

Dimo Dietrich^{1*§}, Manuel Krispin^{1*}, Jörn Dietrich¹, Anne Fassbender¹, Jörn Lewin¹, Nadia Harbeck², Manfred Schmitt³, Serenella Eppenberger-Castori^{4,5}, Vincent Vuaroqueaux⁴, Frédérique Spyratos⁶, John A. Foekens⁷, Ralf Lesche¹, John W. M. Martens⁷

¹ Epigenomics AG, Berlin, Germany

² Breast Center, University of Cologne, Germany

³ Technical University Munich, Germany

⁴ Stiftung Tumorbank, Basel, Switzerland

⁵ Institute of Pathology, University Basel, Switzerland

⁶ Centre René Huguenin, St. Cloud, France

⁷ Erasmus MC, Josephine Nefkens Institute and Cancer Genomics Centre, Rotterdam, The Netherlands

*These authors contributed equally to this work

§Corresponding author

Email addresses:

DD: dimo.dietrich@epigenomics.com

MK: manuel.krispin@epigenomics.com

JD: joedietrich@web.de

AF: anne.fassbender@epigenomics.com

JL: joern.lewin@epigenomics.com

NH: nadia.harbeck@uk-koeln.de

MS: manfred.schmitt@lrz.tu-muenchen.de

SEC: sere.eppenberger@unibas.ch

VV: v.vuaroqueaux@tumorbank.org

FS: f.spyratos@stcloud-huguenin.org

JWMM: j.martens@erasmusmc.nl

JAF: j.foekens@erasmusmc.nl

RL: ralf.lesche@bayerhealthcare.com

Abstract

Background

Various biomarkers for prediction of distant metastasis in lymph-node negative breast cancer have been described; however, predictive biomarkers for patients with lymph-node positive (LNP) disease in the context of distinct systemic therapies are still very much needed. DNA methylation is aberrant in breast cancer and is likely to play a major role in disease progression. In this study, the DNA methylation status of 202 candidate loci was screened to identify those loci that may predict outcome in LNP/estrogen receptor-positive (ER+) breast cancer patients with adjuvant anthracycline-based chemotherapy.

Methods

Quantitative bisulfite sequencing was used to analyze DNA methylation biomarker candidates in a retrospective cohort of 162 LNP/ER+ breast cancer patients, who received adjuvant anthracycline-based chemotherapy. First, twelve breast cancer specimens were analyzed for all 202 candidate loci to exclude genes that showed no differential methylation. To identify genes that predict distant metastasis, the remaining loci were analyzed in 84 selected cases, including the 12 initial ones. Significant loci were analyzed in the remaining 78 independent cases. Metastasis-free survival analysis was conducted by using Cox regression, time-dependent ROC analysis, and the Kaplan-Meier method. Pairwise multivariate regression analysis was performed by linear Cox Proportional Hazard models, testing the association between methylation scores and clinical parameters with respect to metastasis-free survival.

Results

Of the 202 loci analysed, 37 showed some indication of differential DNA methylation among the initial 12 patient samples tested. Of those, 6 loci were associated with outcome in the initial cohort ($n = 84$, log rank test, $p < 0.05$).

Promoter DNA methylation of cysteine dioxygenase 1 (CDO1) was confirmed in univariate and in pairwise multivariate analysis adjusting for age at surgery, pathological T stage, progesterone receptor status, grade, and endocrine therapy as a strong and independent biomarker for outcome prediction in the independent validation set (log rank test p -value = 0.0010).

Conclusions

CDO1 methylation was shown to be a strong predictor for distant metastasis in retrospective cohorts of LNP/ER+ breast cancer patients, who had received adjuvant anthracycline-based chemotherapy.

Background

Breast cancer is the most frequent cancer in women (27% of all cancers, United States 2009), accounting for 15% of all female cancer deaths [1]. Chemotherapy of breast cancer has progressed substantially over the past decades. Anthracyclines, introduced in the 1980s, are among the most potent agents for treatment of breast cancer and thus are components of many (neo)-adjuvant and palliative regimens, more recently often in combination with taxanes [2].

In node-positive breast cancer, anthracycline-based adjuvant chemotherapy has become the standard of care since the 1990s [3]; 69% of LNP breast cancer patients remained disease-free after five years after treatment with anthracycline-based chemotherapy [4]. Those long-term disease-free patients are supposed to have been effectively treated and any more aggressive treatment thus seems to be unnecessary. Yet, treatment with anthracyclines is linked with both, acute and long-term side effects, most notably cardiotoxicity [8]. Therefore, if a biomarker was available to reliably identify LNP patients with a low risk of recurrence after adjuvant anthracycline-based chemotherapy, further treatment of this patient group with other chemotherapy agents could be avoided. Biomarkers, specifically predictive for the outcome of patients treated with anthracyclines alone, are therefore essential and will help personalize decisions regarding whether to incorporate additional chemotherapy agents into adjuvant therapy regimens for individual patients.

DNA methylation plays an important role in fundamental biological processes such as development and cellular differentiation [9]. DNA methylation has been shown to play a major role in carcinogenesis and cancer progression [10], suggesting that DNA methylation analysis may be a valuable source of predictive and/or prognostic biomarkers [11]. In this study, quantitative bisulfite sequencing [12] was used to screen 202 biomarker candidates for their prognostic impact in LNP/ER+ breast cancer patients who had received adjuvant anthracycline-based chemotherapy. The marker candidates were selected from the literature or identified by differential methylation hybridization (DMH) technology, a method for genome-wide discovery of methylation biomarkers [13]. Promoter DNA methylation of cysteine dioxygenase 1 (CDO1) was identified as a strong predictor of distant metastasis. This finding was confirmed in an independent patient group of advanced LNP/ER+ breast cancer patients treated with adjuvant anthracycline-based chemotherapy.

Methods

Patients. The study cohort was comprised of 162 breast cancer patients whose tumor samples were obtained from 4 clinical centers: Erasmus Medical Center, Rotterdam, The Netherlands; Centre René Huguenin, St. Cloud, France; Stiftung Tumorbank Basel, Basel, Switzerland; and Department of Obstetrics and Gynecology, Technical University of Munich, Germany. Appropriate consent, according to institutional requirements, was obtained from all patients. The study protocol was approved by the local ethics committees. Patient characteristics are shown in Table 1. All breast cancer patients were anthracycline-treated with estrogen receptor-positive, lymph node-positive tumors.

DNA Preparation. Leftover bisulfite DNA was used, which was prepared in the course of a previous study [14]. In brief, snap-frozen tumor tissue or tumor cell nuclei pelleted at 100,000g were used to obtain genomic DNA as previously described [15]. Genomic DNA was extracted using the QIAamp DNA Mini Kit (Qiagen, Hilden, Germany), following the manufacturer's instructions (tissue protocol). The DNA concentration was quantified by UV spectrophotometry using a Nanodrop® ND-1000 spectral photometer (Nanodrop Technologies, DE, USA). Artificially methylated DNA (CpGenome™ Universal Methylated DNA, Millipore, MA, USA) was used as completely methylated reference DNA. Two µg of extracted DNA was bisulfite converted using the EpiTect® Kit (Qiagen, Hilden, Germany) according to the manufacturer's recommendations with the exception that no carrier RNA was used. DNA concentration was quantified via UV spectrophotometry as described above.

PCR Amplification. PCR amplification was done in a 25 µl volume (1 U HotStar Taq polymerase [Qiagen, Hilden, Germany], 1 x PCR buffer [Qiagen, Hilden, Germany], 0.2 mM each dNTP [Fermentas, Burlington, Canada], 0.5 µM both primers [MWG-Biotech, Ebersberg, Germany], and 20 ng template DNA). Incubation was done using the following temperature profile: 15 min / 95 °C and 45 cycles with 20 s / 95 °C, 45 s / 58 °C and 30 s / 72 °C. The primer sequences and the sequences of the respective target loci (prior to bisulfite conversion) are listed in the additional file 1: Analyzed genes and primer sequences. Each reverse primer contained the sequence CGTCGTCG at its 5' end.

Sequencing and Raw Data Processing. Quantitative bisulfite sequencing was carried out as previously described [12]. ABI sequencing electropherograms were converted to text files using BioEdit 6.0.7 software and imported into Microsoft Excel.

The trace containing the methylation information was visualized and the normalization signal identified. The electropherograms were shifted until the normalization signal of each sample was located at the same position. The normalization signal was integrated and each data point of the electropherogram divided by this normalization value. The analyzed PCR fragments contained several CpG sites. The signals of the single CpG sites of completely methylated DNA were used to identify the CpG positions in the electropherograms of the patient samples. The maximum intensity of a specific CpG site was defined as the maximum in the region ± 30 data points referred to the respective peak in the reference trace of the completely methylated DNA. The averaged intensities of all CpG sites from one PCR fragment were used as measurement (methylation score) for statistical analysis.

Statistical Analysis. Time-dependent ROC curves for censored survival data and the resulting AUC were calculated according to Heagerty et al. [16]. WinSTAT for Microsoft Excel (www.winstat.com) was used for Kaplan-Meier survival analysis and log rank test. The median methylation value in the respective patient group was used as the cut point for dichotomization.

The relation between time to distant metastasis and DNA methylation score was analyzed by a linear univariate Cox Proportional Hazard model. Likelihood ratio tests were performed to test for a significant impact of DNA methylation score for the CDO1 amplificate on clinical end points. Hazard Ratios for continuous variables were calculated. Pairwise multivariate regression analysis, testing the association between clinical end point and DNA methylation score and/or clinical parameters, was performed by employing linear Cox Proportional Hazard models.

Results

A recently published novel method for quantitative bisulfite sequencing [12] was used to analyze the methylation status of 202 potential DNA methylation biomarkers in tumors from 162 anthracycline-treated, estrogen receptor-positive, lymph node-positive breast cancer patients in order to evaluate their potential to predict distant metastasis. Information about all analyzed genes can be found in the additional file 1: Analyzed genes and primer sequences. The marker candidates were taken from the literature or have previously been identified using differential methylation hybridization (DMH), a genome-wide discovery method (data not shown). A consecutive marker selection procedure as depicted in Figure 1 was developed in order to efficiently identify DNA methylation biomarkers for outcome prediction. In a first selection step, all 202 loci were analyzed using bisulfite treated DNA from 12 randomly selected individual tumors to exclude those that showed no evidence of differential methylation among the samples. The remaining candidates were further tested for their potential ability to predict distant metastasis in a set of 72 additional patient specimens, resulting in a training group of 84 patients in total. In the final step of analysis, the significant DNA methylation biomarkers evolving from the training set were further analyzed in an independent validation set of DNA samples from 78 patients, in order to confirm and validate their true clinical potential. The characteristics of patients belonging to the training and validation sets are shown in Table 1.

From the initially analyzed 202 loci, 165 did not show an apparent differential DNA methylation pattern among the initial 12 samples tested, and therefore these loci were excluded from further analyses. Of the remaining 37 candidates, six loci were associated with the occurrence of distant metastasis in this training population. The methylation data of these 37 candidates and the clinical information of the 162 patients are shown in the additional file 2. Time-dependent ROC analysis and Kaplan-Meier analysis was performed. In order to avoid an overly optimistic result, the median DNA methylation score of the training set was used as the cut point. The results of the DNA methylation biomarkers containing prognostic information in the training set are shown in Table 2. Six genes (CDO1, APC, ZBTB16, NCR1, POU4F3, and CXCL12) emerged as potential biomarkers in the training set indicated by $p <$

0.05 and AUC > 0.6. Analysis of the six genes in the validation set (Table 2) confirmed the ability of the CDO1 gene to predict outcome ($p = 0.0010$, AUC = 0.69) while the predictive ability of DNA methylation of the other five genes could not be confirmed in the validation set, although ZBTB16 and POU4F3 just failed statistical significance. The result for CDO1 still remained significant after a Bonferroni correction for 6 tests ($p = 0.0060$). The Kaplan-Meier survival plots stratified by the DNA methylation status of CDO1 both in the training and validation set are depicted in Figure 2. Evidently, DNA methylation of CDO1 is a strong biomarker to predict distant metastasis in LNP patients with ER+ tumors treated with adjuvant anthracycline containing therapy. Table 3 shows the results of the univariate and the pairwise multivariate Cox Proportional Hazard models of the validation population ($n = 78$). In univariate analysis, the DNA methylation score for CDO1 is associated with a high risk of distant recurrence in this patient group ($p = 0.0098$, HR = 3.7, 95% CI 1.4 - 9.8). In addition, progesterone receptor status ($p = 0.0190$, HR = 2.7, 95% CI 1.2 - 6.0) was significantly associated with time-to-distant metastasis in this group whereas tumor stage, endocrine treatment, tumor grade, and age at surgery were not. CDO1 DNA methylation was a significant marker in the pairwise multivariate analysis including age at surgery, pathological T stage, progesterone receptor status, tumor grade or endocrine therapy. Patients who suffered disease recurrence showed higher DNA methylation of the CDO1 locus than those surviving metastasis-free.

A subset of the patient samples ($n = 136$) were also included in a previous microarray study, where DNA methylation of BMP4, FGF4, and C20orf55 was identified as biomarkers for outcome prediction [14]. The p-values obtained by the log rank test in Kaplan-Meier survival analysis revealed comparable clinical performance of the CDO1 methylation biomarker in this subgroup as compared to FGF4 (CDO1 $p = 0.0017$, FGF4 $p = 0.0030$). BMP4 and C20orf55 were not significant in this small subgroup of patients (C20orf55 $p = 0.4948$, BMP4 $p = 0.1100$). The median DNA methylation score from the 136 patient samples was used as the cut point for patient stratification.

Discussion

DNA methylation of 202 loci was analyzed in tumors from breast cancer patients who were estrogen receptor-positive, lymph node-positive, and treated with adjuvant anthracycline-based chemotherapy, in order to identify biomarkers to predict patient outcome. Patient samples from this study were previously used to identify a four-marker panel including PITX2, BMP4, FGF4, and C20orf55 which enabled outcome prediction in lymph node-positive, HER-2-negative breast cancer patients treated with anthracycline-based chemotherapy [14].

In the presented study, cysteine dioxygenase 1 (CDO1) was identified as a strong DNA methylation biomarker for outcome prediction in the analyzed patient group. CDO1 was previously discovered as a candidate biomarker using the DMH method by determining its DNA methylation status in tumors from patients with metastatic breast cancer who were treated by FAC (5-fluorouracil, adriamycin, and cyclophosphamide) regimen as first-line therapy. The CDO1 gene encodes for an enzyme that converts cysteine to cysteine sulphinic acid and is the rate-limiting step in sulphate production. CDO1 is understood to be one of the key enzymes in the taurine biosynthetic pathway [17]. Taurine inhibits apoptosis [18-21]. The human CDO1 gene is located at chromosome 5q23.2 and is homologous to the rat and murine cysteine dioxygenases. Murine Cdo1 may be involved in the regulation of protein function and antioxidant defense mechanisms through its ability to oxidize cysteine residues [22]. Staub et al. [23] assumed that deletion or epigenetic silencing of the chromosomal region where CDO1 is located is a frequent mechanism contributing to colorectal tumorigenesis. Recently, over-expression of CDO1 was described for the Sézary syndrome, an aggressive cutaneous T-cell lymphoma [24]. Nonetheless, as of today, no aberrant DNA methylation of the CDO1 gene has been described in the context of breast cancer. Expression of cysteine dioxygenase was found in ductal cells of pregnant rats, but not in other mammary epithelial cells or in ductal cells of nonpregnant rats [25]. Interestingly, repression of Cdo1 expression was identified to be associated with the malignant transition from mammary intraepithelial neoplasia to tumors in an engineered mouse-based model of ductal carcinoma in situ [26]. However, whether the observed repression was caused by DNA methylation of CDO1 was not assessed in that study.

The results of this study do not show if methylation of CDO1 is a general prognostic biomarker which is independent of the nature of the adjuvant treatment or if it is predictive for a response to an adjuvant anthracycline-based chemotherapy. Further studies with other patient populations such as patients who did not receive an adjuvant anthracycline-based chemotherapy or the functional analysis of cell lines might shed further light on a potential predictive value of CDO1 methylation.

Conclusions

DNA methylation of CDO1 was found to be a strong biomarker for prediction of distant recurrence in lymph node-positive patients with estrogen receptor-positive tumors treated with adjuvant anthracycline containing therapy.

Abbreviations

ROC Receiver Operating Characteristic, AUC Area under the Curve, DMH Differential Methylation Hybridization, CI Confidence Interval, HR Hazard Ratio, CDO1 Cysteine Dioxygenase 1, APC Adenomatosis Polyposis Coli, MDA Multiple Displacement Amplification, NCR1 Natural Cytotoxicity Triggering Receptor 1, POU4F3 POU Class 4 Homeobox 3, CXCL12 Chemokine, (C-X-C motif) Ligand 12, ZBTB16 Zinc Finger and BTB Domain Containing 16.

Competing interests

The authors DD, MK, AF, JD, JL, and RL are or have been employees and/or shareholders of Epigenomics AG (Berlin, Germany), a company that aims to commercialize DNA methylation markers. The other authors report to have no conflict of interest regarding the topic of the article.

Authors' contributions

DD drafted the manuscript, conceived and coordinated the study, participated in marker candidate selection, helped to carry out the experiments and participated in the statistical analysis. MK carried out the statistical analysis, participated in carrying out the experiments and helped to draft the manuscript. JD developed scripts for the data management, data processing and analysis and helped to carry out the experiments and to draft the manuscript. JL provided a script for the conversion of sequencing raw data into txt format. AF provided marker candidates from DMH studies. NH, MS, SEC, VV, FS, and JAF participated in the design of the study and provided and characterized the sample material, and assisted in the preparation of the manuscript. JWMM participated in the design of the study, provided and characterized the sample material and finalized the manuscript. RL participated in the design of the study and its supervision, provided marker candidates and revised the manuscript. All authors read and approved the final version of the manuscript.

References

1. Jemal A, Siegel R, Ward E, Hao Y, Xu J, Thun MJ: **Cancer statistics, 2009.** *CA Cancer J Clin* 2009, **59**:225-49.
2. Valero V, Hortobagyi GN. **Are anthracycline-taxane regimens the new standard of care in the treatment of metastatic breast cancer?** *J Clin Oncol* 2003, **21**:959-62.
3. Nabholz JM, Riva A: **Taxane/anthracycline combinations: setting a new standard in breast cancer?** *Oncologist* 2001, **6 Suppl 3**:5-12.
4. Martin M, Pienkowski T, Mackey J, Pawlicki M, Guastalla JP, Weaver C, Tomiak E, Al-Tweigeri T, Chap L, Juhos E, Guevin R, Howell A, Fornander T, Hainsworth J, Coleman R, Vinholes J, Modiano M, Pinter T, Tang SC, Colwell B, Prady C, Provencher L, Walde D, Rodriguez-Lescure A, Hugh J, Loret C, Rupin M, Blitz S, Jacobs P, Murawsky M, Riva A, Vogel C; Breast Cancer International Research Group 001 Investigators: **Adjuvant docetaxel for node-positive breast cancer.** *N Engl J Med* 2005, **352**:2302-2313.
5. Coon JS, Marcus E, Gupta-Burt S, Seelig S, Jacobson K, Chen S, Renta V, Fronda G, Preisler HD: **Amplification and overexpression of topoisomerase IIalpha predict response to anthracycline-based therapy in locally advanced breast cancer.** *Clin Cancer Res* 2002, **8**:1061-1067.
6. Di Leo A, Gancberg D, Larsimont D, Tanner M, Jarvinen T, Rouas G, Dolci S, Leroy JY, Paesmans M, Isola J, Piccart MJ: **HER-2 amplification and topoisomerase IIalpha gene aberrations as predictive markers in node-positive breast cancer patients randomly treated either with an anthracycline-based therapy or with cyclophosphamide, methotrexate, and 5-fluorouracil.** *Clin Cancer Res* 2002, **8**:1107-1116.
7. Petit T, Wilt M, Velten M, Millon R, Rodier JF, Borel C, Mors R, Haeghele P, Eber M, Ghnassia JP: **Comparative value of tumour grade, hormonal receptors, Ki-67, HER-2 and topoisomerase II alpha status as predictive markers in breast cancer patients treated with neoadjuvant anthracycline-based chemotherapy.** *Eur J Cancer* 2004, **40**:205-211.
8. Jones RL, Swanton C, Ewer MS: **Anthracycline cardiotoxicity.** *Expert Opin Drug Saf* 2006, **5**:791-809.
9. Robertson KD: **DNA methylation and human disease.** *Nat Rev Genet* 2005, **6**:597-610.
10. Ting AH, McGarvey KM, Baylin SB: **The cancer epigenome--components and functional correlates.** *Genes Dev* 2006, **20**:3215-3231.
11. Duffy MJ, Napieralski R, Martens JW, Span PN, Spyrtos F, Sweep FC, Brunner N, Foekens JA, Schmitt M; EORTC PathoBiology Group: **Methylated genes as new cancer biomarkers.** *Eur J Cancer* 2009, **45**:335-346.
12. Dietrich D, Lesche R, Tetzner R, Krispin M, Dietrich J, Haedicke W, Schuster M, Kristiansen G: **Analysis of DNA Methylation of Multiple Genes in Microdissected Cells From Formalin-fixed and Paraffin-embedded Tissues.** *J Histochem Cytochem* 2009, **57**:477-489.
13. Lewin J, Plum A, Hildmann T, Rujan T, Eckhardt F, Liebenberg V, Lofton-Day C, Wasserkort R: **Comparative DNA methylation analysis in normal and tumour tissues and in cancer cell lines using differential methylation hybridisation.** *Int J Biochem Cell Biol* 2007, **39**:1539-1550.

14. Hartmann O, Spyrtos F, Harbeck N, Dietrich D, Fassbender A, Schmitt M, Eppenberger-Castori S, Vuaroqueaux V, Lerebours F, Welzel K, Maier S, Plum A, Niemann S, Foekens JA, Lesche R, Martens JW: **DNA methylation markers predict outcome in node-positive, estrogen receptor-positive breast cancer with adjuvant anthracycline-based chemotherapy.** *Clin Cancer Res* 2009, **15**:315-323.
15. Martens JW, Nimmrich I, Koenig T, Look MP, Harbeck N, Model F, Kluth A, Bolt-de Vries J, Sieuwerts AM, Portengen H, Meijer-Van Gelder ME, Piepenbrock C, Olek A, Höfler H, Kiechle M, Klijn JG, Schmitt M, Maier S, Foekens JA: **Association of DNA methylation of phosphoserine aminotransferase with response to endocrine therapy in patients with recurrent breast cancer.** *Cancer Res* 2005, **65**:4101-4117.
16. Heagerty PJ, Lumley T, Pepe MS: **Time-dependent ROC curves for censored survival data and a diagnostic marker.** *Biometrics* 2000, **56**:337-344.
17. Satsu H, Terasawa E, Hosokawa Y, Shimizu M: **Functional characterization and regulation of the taurine transporter and cysteine dioxygenase in human hepatoblastoma HepG2 cells.** *Biochem J* 2003, **375**:441-447.
18. Wu QD, Wang JH, Fennessy F, Redmond HP, Bouchier-Hayes D: **Taurine prevents high-glucose-induced human vascular endothelial cell apoptosis.** *Am J Physiol* 1999, **277**:C1229-1238.
19. Condon C, Neary P, Toomey D, Redmond HP, Bouchier-Hayes D: **Taurine attenuates calcium-dependent, Fas-mediated neutrophil apoptosis.** *Shock* 2003, **19**:564-569.
20. Takatani T, Takahashi K, Uozumi Y, Shikata E, Yamamoto Y, Ito T, Matsuda T, Schaffer SW, Fujio Y, Azuma J: **Taurine inhibits apoptosis by preventing formation of the Apaf-1/caspase-9 apoptosome.** *Am J Physiol* 2004, **287**:C949-953.
21. Warskulat U, Borsch E, Reinehr R, Heller-Stilb B, Roth C, Witt M, Haussinger D: **Taurine deficiency and apoptosis: findings from the taurine transporter knockout mouse.** *Arch Biochem Biophys* 2007, **462**:202-209.
22. Oien DB, Moskovitz J: **Ablation of the mammalian methionine sulfoxide reductase A affects the expression level of cysteine deoxygenase.** *Biochem Biophys Res Commun* 2007, **352**:556-559.
23. Staub E, Gröne J, Mennerich D, Röpcke S, Klamann I, Hinzmann B, Castanos-Velez E, Mann B, Pilarsky C, Brümmendorf T, Weber B, Buhr HJ, Rosenthal A: **A genome-wide map of aberrantly expressed chromosomal islands in colorectal cancer.** *Mol Cancer* 2006, **5**:37.
24. Booken N, Gratchev A, Utikal J, Weiss C, Yu X, Qadoumi M, Schmuth M, Sepp N, Nashan D, Rass K, Tüting T, Assaf C, Dippel E, Stadler R, Klemke CD, Goerdt S: **Sezary syndrome is a unique cutaneous T-cell lymphoma as identified by an expanded gene signature including diagnostic marker molecules CDO1 and DNM3.** *Leukemia* 2008, **22**:393-399.
25. Ueki I, Stipanuk MH: **Enzymes of the taurine biosynthetic pathway are expressed in rat mammary gland.** *J Nutr* 2007, **137**:1887-1894.
26. Namba R, Maglione JE, Young LJ, Borowsky AD, Cardiff RD, MacLeod CL, Gregg JP: **Molecular characterization of the transition to malignancy in a genetically engineered mouse-based model of ductal carcinoma in situ.** *Mol Cancer Res* 2004, **2**:453-463.

Table 1: Characteristics of the 162 estrogen receptor-positive and lymph node positive breast cancer patients treated with anthracyclines.

	Training Set [†]		Validation Set	
	All	Distant Metastasis	All	Distant Metastasis
Total Number of Patients	84 (100%)	39	78 (100%)	25
Follow-up				
Median follow-up [Months]	80		53.5	
Range [Months]	6-144		5-166	
Age at Diagnosis				
≤ 50 Years	38 (45%)	20	41 (53%)	16
> 50 Years	46 (55%)	19	37 (47%)	19
Median Age (Years)	49		49	
Range (Years)	29-71		33 - 81	
T stage				
≤ 2 cm (T1)	19 (23%)	4	24 (31%)	5
> 2 cm (T2+T3)	63 (75%)	35	53 (68%)	19
Unknown	2 (2%)	0	1 (1%)	1
Tumor Grade				
G1	2 (2%)	0	3 (4%)	1
G2	24 (29%)	11	30 (38%)	7
G3	47 (56%)	21	28 (36%)	11
Unknown	11 (13%)	7	17 (22%)	6
Estrogen Receptor Status				
Negative	0	0	0	0
Positive	84 (100%)	39	78 (100%)	25
Progesterone Receptor Status				
Negative	12 (14%)	4	18 (23%)	9
Positive	72 (86%)	35	60 (77%)	16
Endocrine Treatment				
Yes	22 (26%)	8	37 (47%)	9
No	61 (73%)	30	40 (51%)	15
Unknown	1 (1%)	1	1 (1%)	1

[†]The training set was enriched for specimens that lack PITX2 methylation.

Table 2: Time-dependent ROC analysis of the candidate genes in the training and validation set of LNP patients with ER+ tumors treated with adjuvant anthracycline containing therapy.

Gene	Training Set (n = 84)		Validation Set (n = 78)	
	AUC [†]	p-value [‡]	AUC [†]	p-value [‡]
CDO1	0.70	0.0034	0.69	0.0010
APC	0.68	0.0204	0.55	0.5306
ZBTB16	0.67	0.0224	0.63	0.0582
NCR1	0.63	0.0239	0.56	0.9048
POU4F3	0.69	0.0248	0.69	0.0754
CXCL12	0.67	0.0282	0.49	0.4854

[†]Shown are the AUC of the ROC at 48 months after surgery

[‡] The p-values are those obtained by the log rank test in Kaplan-Meier survival analysis and the genes are ranked according these p-values. The median DNA methylation score from the training set and the validation set, respectively, was used as the cut point.

Table 3: Univariate and pairwise multivariate Cox Proportional Hazards analysis for time-to-distant metastasis.

	Number of samples	Hazard Ratio (95% CI)	p-value [‡]
Univariate Analysis[†]			
CDO1 DNA Methylation	78	3.7 (1.4 – 9.8)	0.0098
Age at Surgery	78	1.3 (0.6 – 2.8)	0.5545
Tumor Stage (T2,T3 vs. T1)	78	2.0 (0.7 – 5.2)	0.1799
Progesterone Receptor Status (Positive vs. Negative)	77	2.7 (1.2 – 6.0)	0.0190
Endocrine Treatment (No vs. Yes)	77	2.0 (0.9 – 4.5)	0.1115
Tumor Grade (3 vs.1,2)	61	2.0 (0.8 – 4.9)	0.1397
Pairwise Multivariate Analysis[†]			
CDO1 DNA Methylation	78	3.9 (1.5 – 10.5)	0.0072
Age at Surgery	78	1.5 (0.7 – 3.4)	0.3160
CDO1 DNA Methylation	77	3.5 (1.3 - 9.5)	0.0128
T Stage (T2,T3 vs. T1)	77	2.0 (0.7 - 5.3)	0.1790
CDO1 DNA Methylation	78	3.5 (1.3 - 9.4)	0.0123
Progesterone Receptor Status (Positive vs. Negative)	78	2.5 (1.1 - 5.7)	0.0275
CDO1 DNA Methylation	77	4.6 (1.6 - 13.5)	0.0055
Endocrine Treatment (No vs. Yes)	77	2.0 (0.9 - 4.7)	0.0938
CDO1 DNA Methylation	61	3.1 (1.1 - 8.7)	0.0318
Tumor Grade (3 vs.1,2)	61	1.7 (0.7 - 4.3)	0.2506

[†]CDO1 DNA methylation and age at surgery were analyzed as continuous variables. T stage, endocrine treatment and progesterone receptor status were analyzed as binary variables.

[‡]p-values refer to Likelihood-ratio test.

Figure Legends.

Figure 1: Overview of the marker candidate selection procedure (description in text).

Figure 2: Kaplan-Meier analysis of metastasis-free survival in the training (84 patients) and the validation set (78 patients) of lymph node-positive patients with estrogen receptor-positive tumors treated with adjuvant anthracycline containing therapy and stratified by the DNA methylation status of CDO1. Median methylation of the respective population was used as the cut point.

Description of Additional Data Files

Additional file 1: Analyzed genes and primer sequences.

This excel spreadsheet (.xls) contains the names of the analyzed genes, the primer sequences and the sequences of the analyzed regions.

Additional file 2: DNA methylation data and patient information.

This excel spreadsheet (.xls) contains clinical patient information from 162 patients and the DNA methylation data from 37 genes which showed differential methylation among the first analyzed 12 samples.

202 marker
candidates



12 patients

165 candidates showed no differential
methylation among samples



37 candidates showed differential
methylation among samples

72 additional
patients (84 in total
= training set)

31 candidates with $p > 0.05$



6 candidates with $p < 0.05$

78 new patients
(= validation set)

5 candidates with $p > 0.05$



1 biomarker with $p < 0.05$

Figure 1

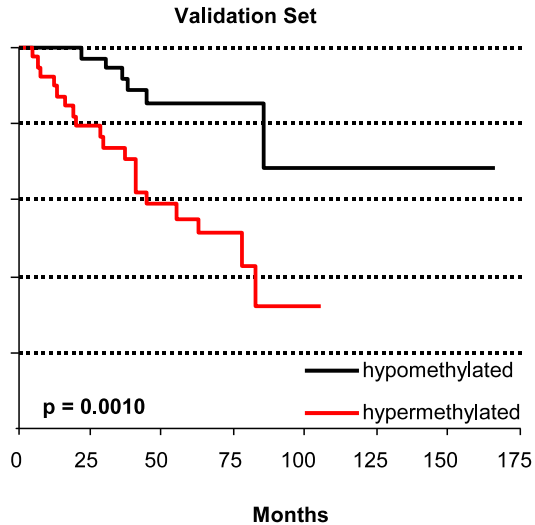
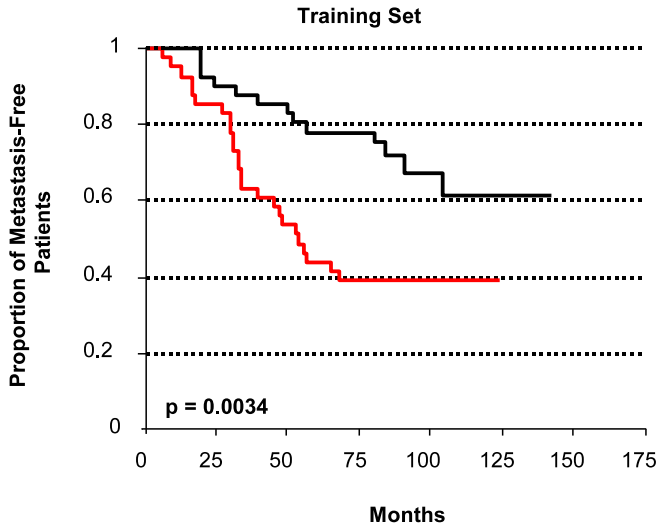


Figure 2

Additional files provided with this submission:

Additional file 1: Additional file 1.xls, 92K

<http://www.biomedcentral.com/imedia/1640058471388575/supp1.xls>

Additional file 2: Additional file 2.xls, 113K

<http://www.biomedcentral.com/imedia/3632871663885755/supp2.xls>